



NATA LIGHTING CO.,LTD.
www.nata.cn
Email:info@nata.com
Tel:+86-750-3770000 Fax:+86-750-3771111
Address:380JinOu Road,GaoXin Zone,Jiang Men City,Guangdong,China

Nata

LumCAT: 1408-N	
Luminaire: 92.70.064.00	
Report No: NATA0100	Voltage(V): 35.9000
Test No: GC2018072807	Current(A): 0.3000
LampCAT: BRIDGELUX V6HD	Power (W): 10.8000
Lamp flux(lm): 1137.0	PF: 0.0000
Number of Lamps: 1	Ballast type: DC
Length(mm): 39	Width(mm): 39
Phm Type: C	Height(mm): 0

Photometric Results

Lumens(lm): 931.97
Efficiency(%): 81.97%
Lumens(lm)/Power(W): 86.69
Central intensity(cd): 863.381
Maximum intensity(cd): 863.381
Angle of maximum intensity: C=0.0 γ =0.0
Beam Angle(50%Imax): [C0/180]Total=58.1
 [C90/270]Total=58.1
Field angle(10%Imax): [C0/180]Total=101.1
 [C90/270]Total=101.1
Maximum s/h(1/2): C0_180=0.86 C90_270=0.86
Maximum s/h(1/4): C0_180=0.91 C90_270=0.91
Up flux rate of lamp(%): 0.00%
Down flux rate of lamp(%): 82.34%
Up flux rate of LUM(%): - -
Down flux rate of LUM(%): 100.00%
CIE Type : Direct lighting
Output flux ratio in π solid angle : 94.936%

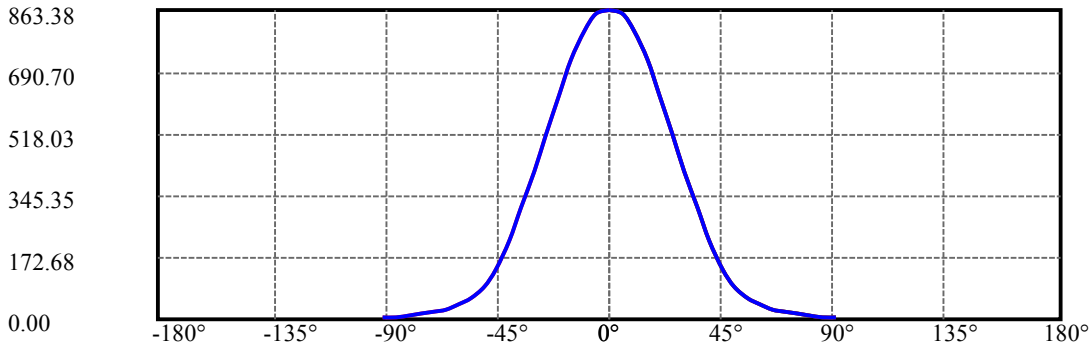
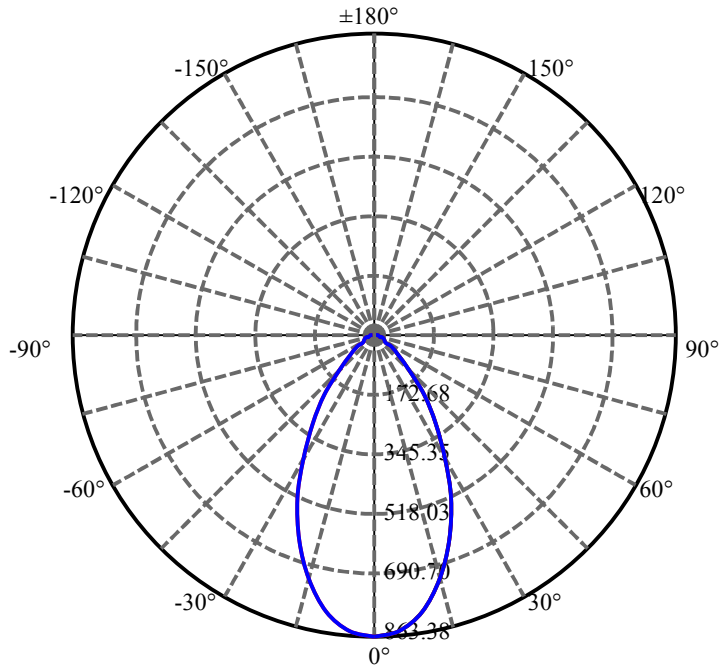
$\gamma(^{\circ})$	Average I(cd)	Zonal F(lm)	Sum F(lm)	Eff Flux(%)	Eff Sum(%)
0.0	863.381	5.163	5.163	.454%	.554%
5.0	850.057	40.610	45.773	3.572%	4.911%
10.0	804.553	76.580	122.353	6.735%	13.128%
15.0	723.290	102.612	224.965	9.025%	24.139%
20.0	627.244	117.592	342.557	10.342%	36.756%
25.0	514.915	119.282	461.838	10.491%	49.555%
30.0	412.386	113.022	574.861	9.940%	61.682%
35.0	311.399	97.903	672.764	8.611%	72.187%
40.0	221.574	78.069	750.833	6.866%	80.564%
45.0	140.573	54.485	805.318	4.792%	86.410%
50.0	89.948	37.769	843.087	3.322%	90.463%
55.0	58.518	26.275	869.362	2.311%	93.282%
60.0	41.017	19.471	888.833	1.712%	95.372%
65.0	29.180	14.496	903.329	1.275%	96.927%
70.0	21.438	11.042	914.371	.971%	98.112%
75.0	14.810	7.841	922.212	.690%	98.953%
80.0	9.862	5.324	927.536	.468%	99.524%
85.0	6.084	3.322	930.858	.292%	99.881%
90.0	4.054	1.111	931.969	.098%	100.000%

ZONAL LUMEN SUMMARY

Zone	Lumens	%Lamp	%Fixt
0-30	574.86	50.56%	61.68%
0-40	750.83	66.04%	80.56%
0-60	888.83	78.17%	95.37%
0-90	930.86	81.87%	99.88%
0-120	930.86	81.87%	99.88%
0-180	931.97	81.97%	100.00%
60-90	61.50	5.41%	6.60%
90-120	0.00	0.00%	0.00%
90-130	0.00	0.00%	0.00%
90-150	0.00	0.00%	0.00%
90-180	0.00	0.00%	0.00%
0-39.66	745.57	65.57%	80.00%

ZONAL LUMEN SUMMARY

0-10	122.35
10-20	220.20
20-30	232.30
30-40	175.97
40-50	92.25
50-60	45.75
60-70	25.54
70-80	13.16
80-90	3.32
90-100	0.00
100-110	0.00
110-120	0.00
120-130	0.00
130-140	0.00
140-150	0.00
150-160	0.00
160-170	0.00
170-180	0.00



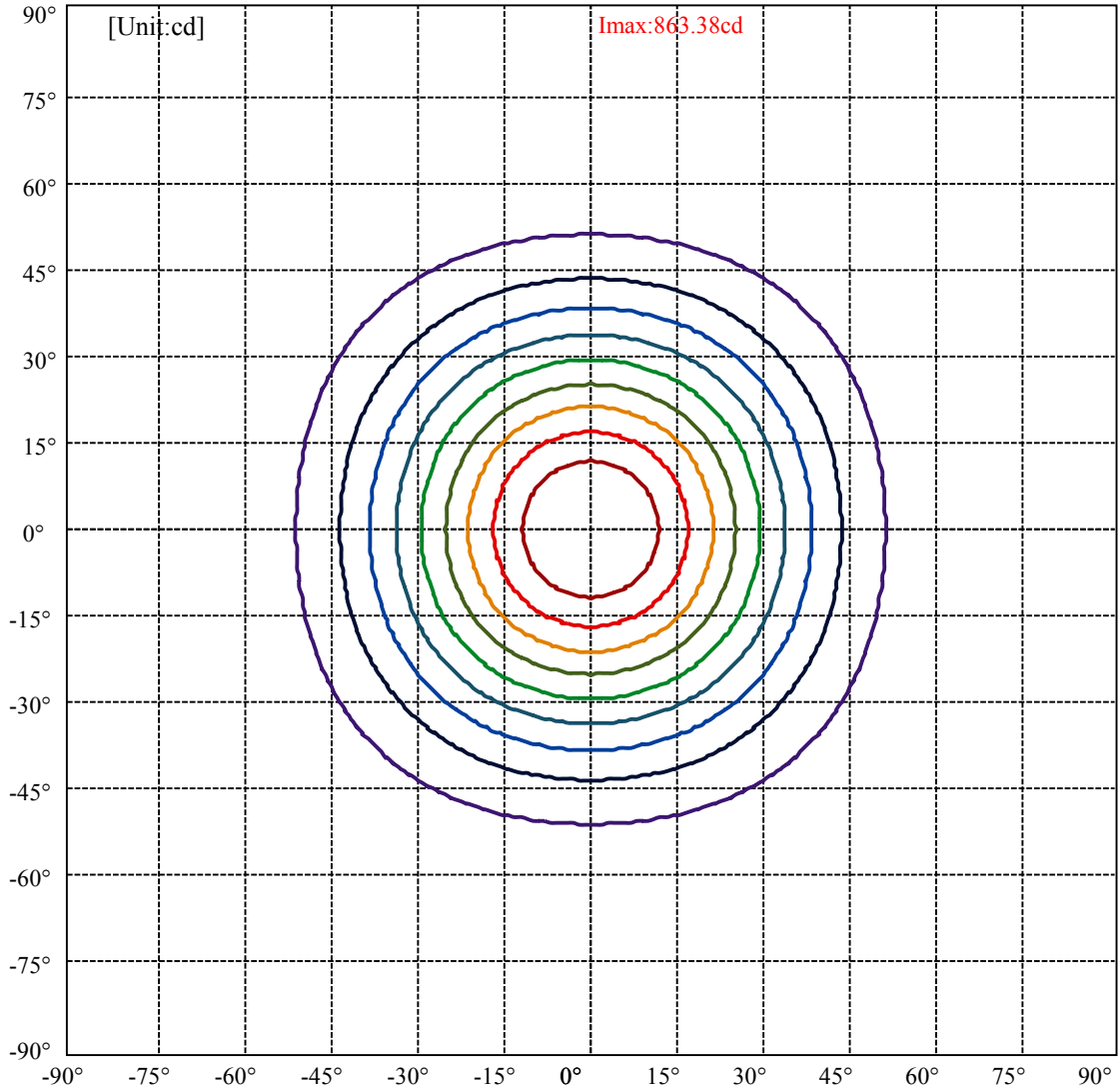
C0(Max): —————

C0/C180: —————

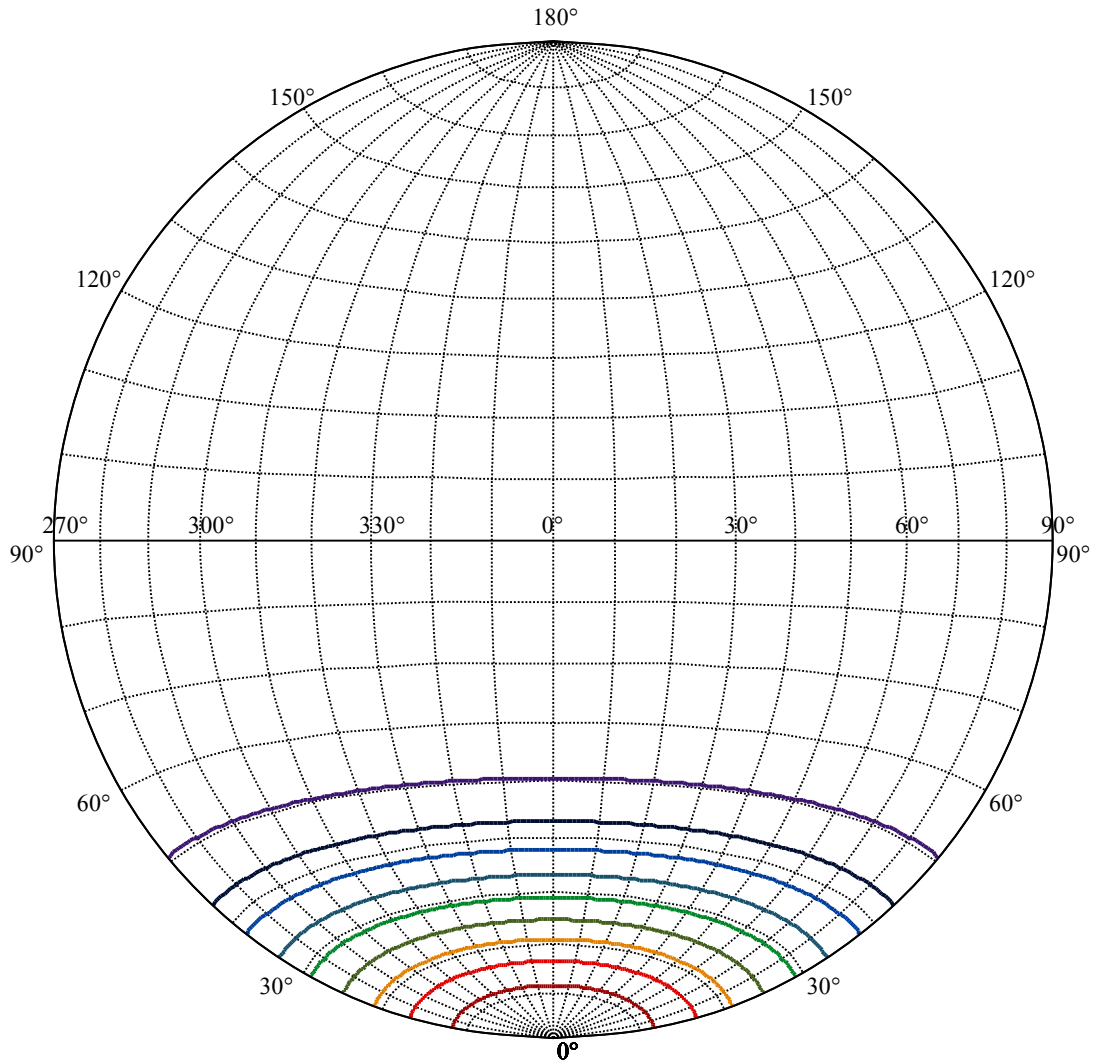
C90/C270: —————

Field angle(10%Imax):C0/180Left:50.6 Right:50.6
:C90/270Left:50.6 Right:50.6

Beam Angle(50%Imax):C0/180Left:29.1 Right:29.1
:C90/270Left:29.1 Right:29.1



(10%Imax) 86.3381	—
(20%Imax) 172.676	—
(30%Imax) 259.014	—
(40%Imax) 345.352	—
(50%Imax) 431.69	—
(60%Imax) 518.029	—
(70%Imax) 604.367	—
(80%Imax) 690.705	—
(90%Imax) 777.043	—



House

[Unit:cd]

Road

I_{max}:863.38

(10%I_{max}) 86.3381

(20%I_{max}) 172.676

(30%I_{max}) 259.014

(40%I_{max}) 345.352

(50%I_{max}) 431.69

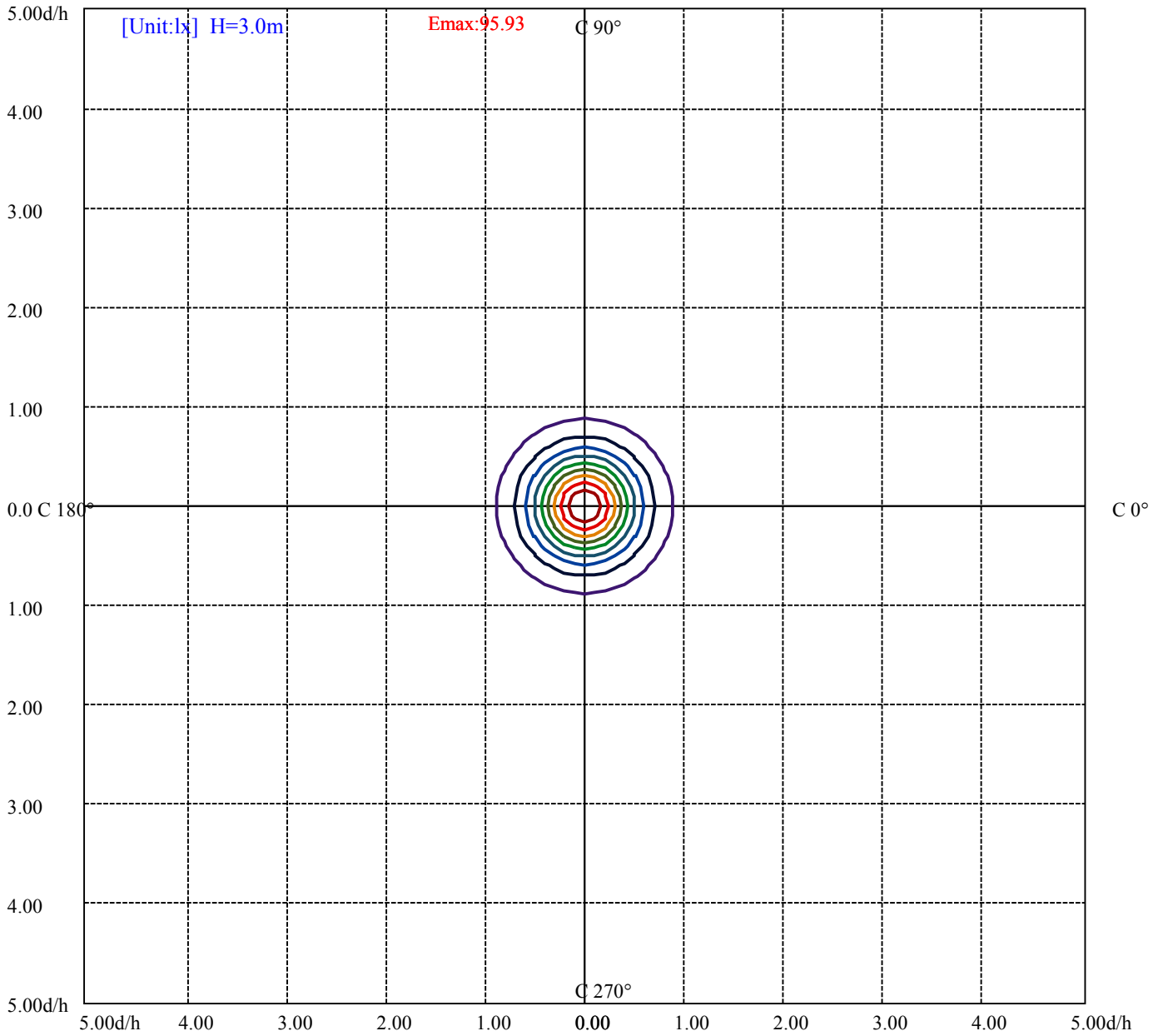
(60%I_{max}) 518.029

(70%I_{max}) 604.367

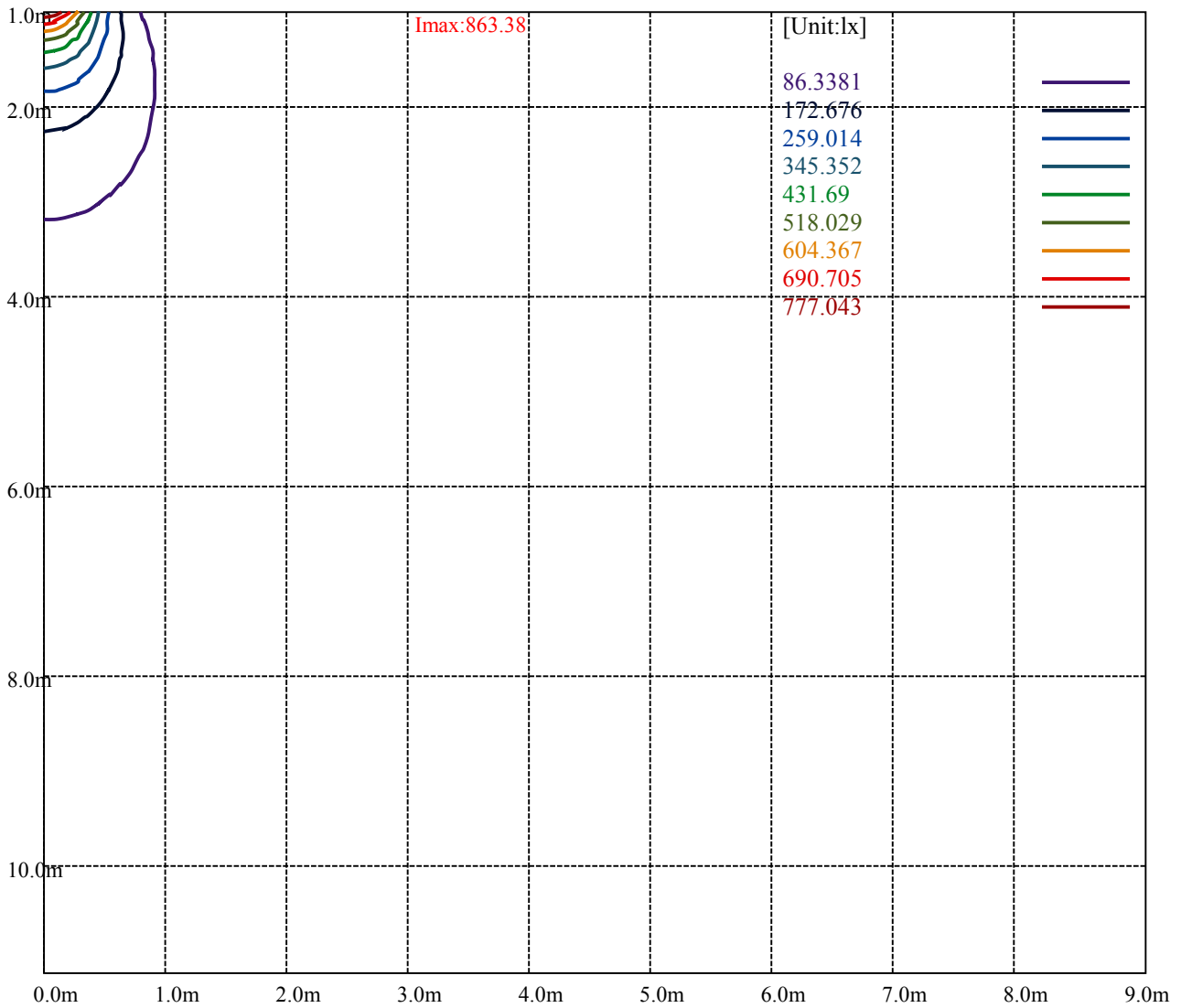
(80%I_{max}) 690.705

(90%I_{max}) 777.043





- (10%Emax) 9.593111
- (20%Emax) 19.18622
- (30%Emax) 28.77934
- (40%Emax) 38.37244
- (50%Emax) 47.96556
- (60%Emax) 57.55867
- (70%Emax) 67.15178
- (80%Emax) 76.74489
- (90%Emax) 86.338



Luminance Table

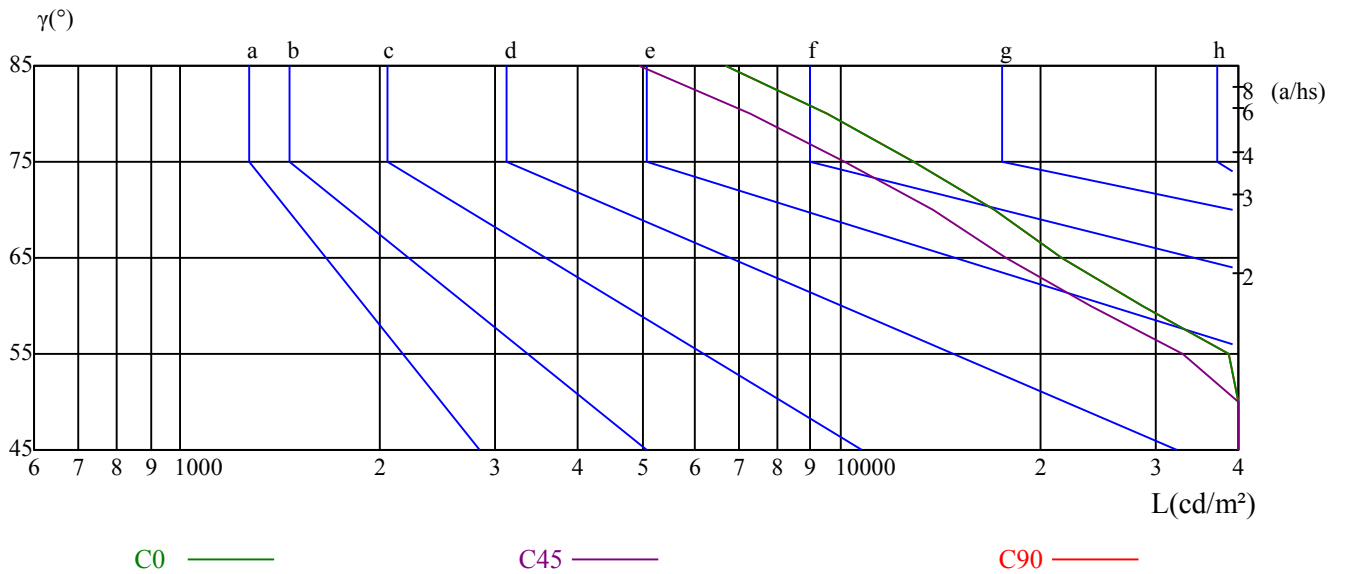
γ	45	50	55	60	65	70	75	80	85
C0	86397	57103	38719	28563	21619	17107	12911	9554	6688
C45	75760	49349	32949	23905	17765	13771	10150	7303	4940
C90	86397	57103	38719	28563	21619	17107	12911	9554	6688

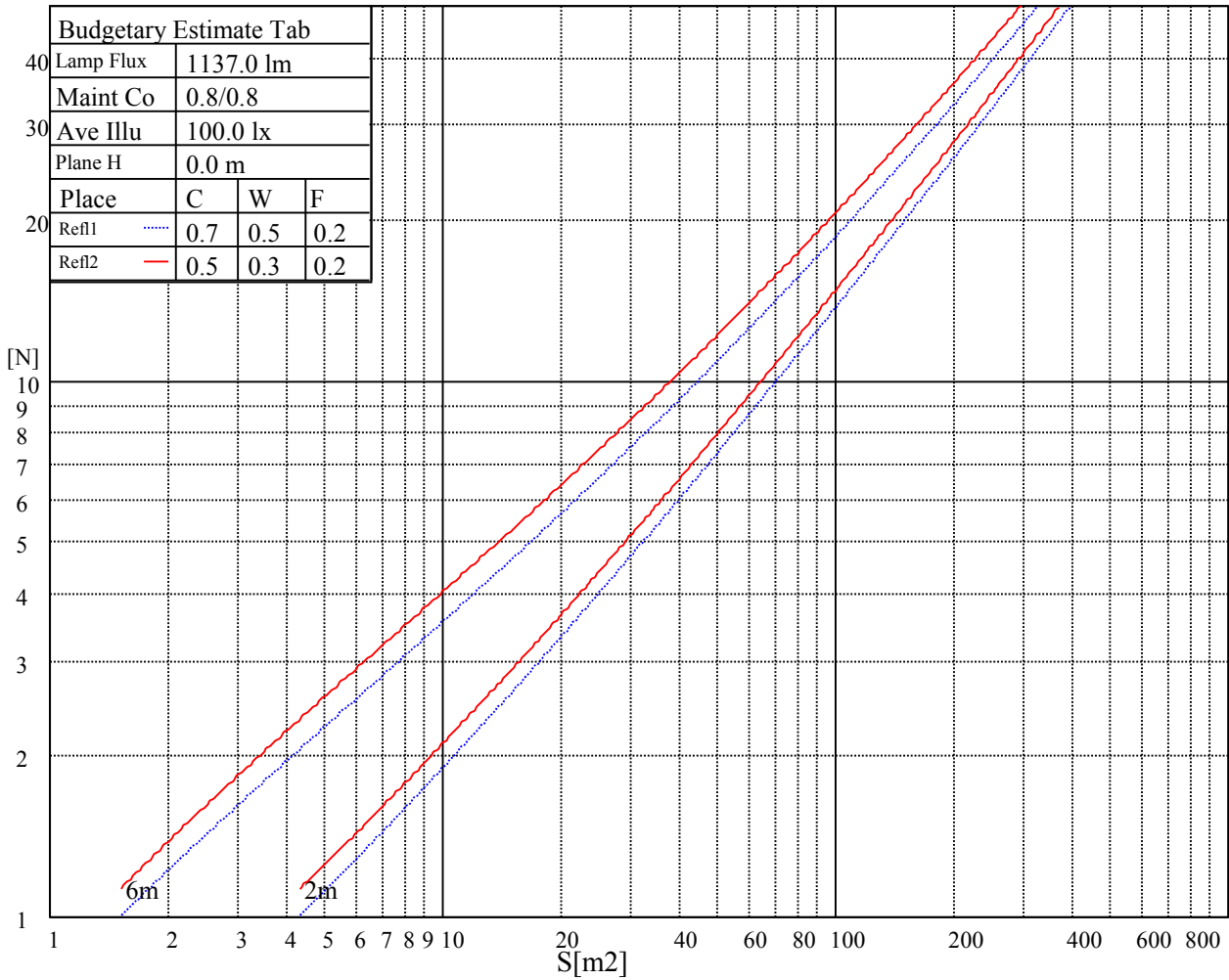
L(Hor)(65)	L(Ver)(65)	L45(65)	L(Hor)(75)	L(Ver)(75)	L45(75)	L(Hor)(85)	L(Ver)(85)	L45(85)
45395	45395	45395	37621	37621	37621	45893	45893	45893

Glare Table

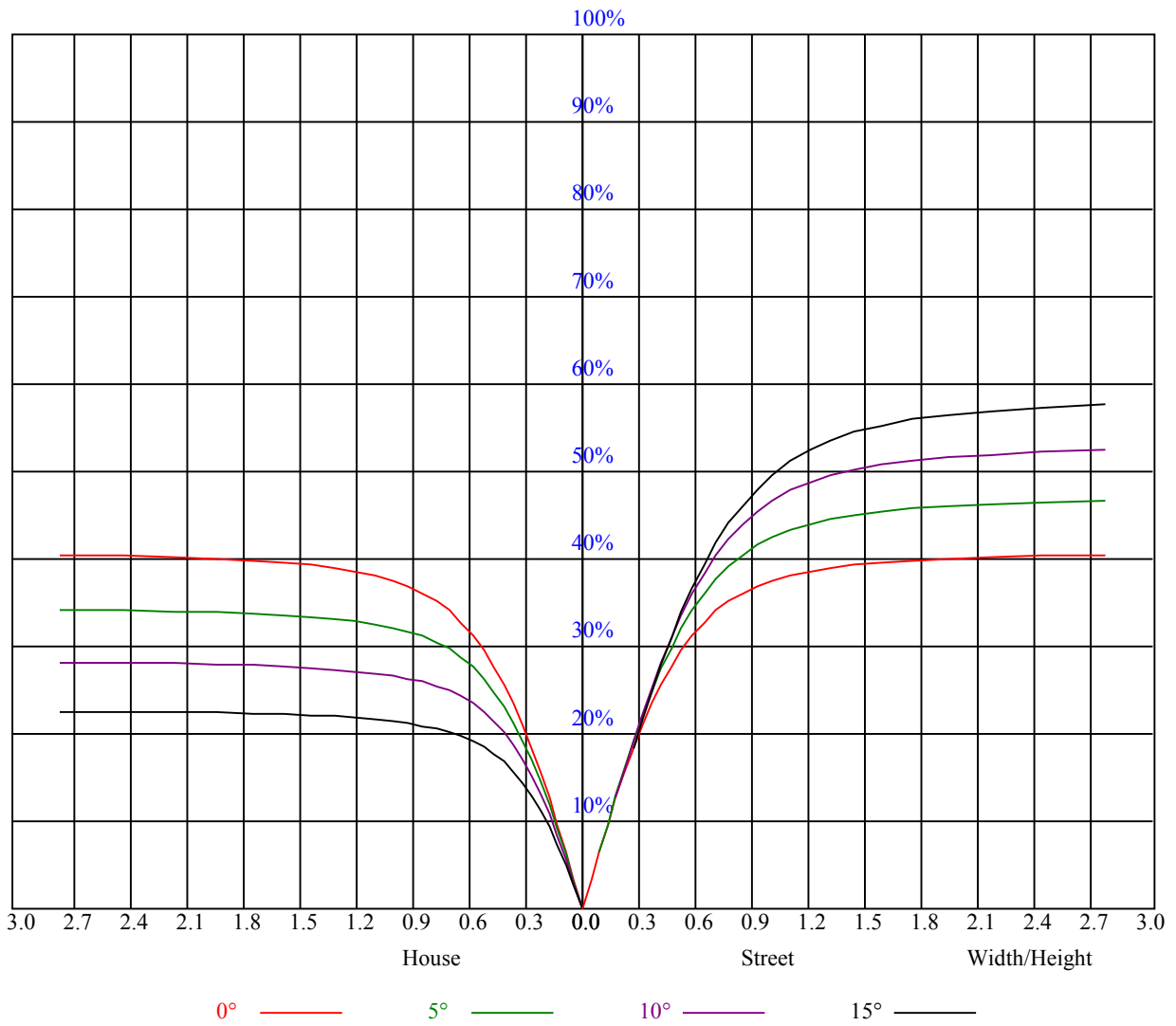
Glare	Quality	Service Values Illuminance(lx)							
1.15	A	2000	1000	500	<=300				
1.5	B		2000	1000	500	<=300			
1.85	C			2000	1000	500	<=300		
2.2	D				2000	1000	500	<=300	
2.55	E					2000	1000	500	<=300
		a	b	c	d	e	f	g	h

Luminance Limiting Curve





RHOCC	80			70			50			30			10			0
RHOW	50	30	10	50	30	10	50	30	10	50	30	10	50	30	10	0
RCR	COEFFICIENTS OF UTILIZATION RHOFC=20 CU															
0	0.98	0.98	0.98	0.96	0.96	0.96	0.91	0.91	0.91	0.88	0.88	0.88	0.84	0.84	0.84	0.82
1	0.90	0.87	0.85	0.88	0.86	0.84	0.84	0.83	0.81	0.81	0.80	0.78	0.78	0.77	0.76	0.75
2	0.82	0.78	0.75	0.81	0.77	0.74	0.78	0.75	0.73	0.76	0.73	0.71	0.73	0.71	0.70	0.68
3	0.76	0.71	0.68	0.75	0.71	0.67	0.73	0.69	0.66	0.71	0.67	0.65	0.69	0.66	0.64	0.62
4	0.70	0.65	0.61	0.69	0.65	0.61	0.68	0.64	0.60	0.66	0.62	0.60	0.64	0.61	0.59	0.58
5	0.66	0.60	0.56	0.65	0.60	0.56	0.63	0.59	0.56	0.62	0.58	0.55	0.60	0.57	0.54	0.53
6	0.61	0.56	0.52	0.61	0.55	0.52	0.59	0.55	0.51	0.58	0.54	0.51	0.57	0.53	0.51	0.49
7	0.57	0.52	0.48	0.57	0.52	0.48	0.56	0.51	0.48	0.55	0.51	0.48	0.54	0.50	0.47	0.46
8	0.54	0.49	0.45	0.53	0.48	0.45	0.53	0.48	0.45	0.52	0.48	0.44	0.51	0.47	0.44	0.43
9	0.51	0.46	0.42	0.50	0.46	0.42	0.50	0.45	0.42	0.49	0.45	0.42	0.48	0.44	0.42	0.40
10	0.48	0.43	0.40	0.48	0.43	0.40	0.47	0.43	0.40	0.46	0.42	0.39	0.46	0.42	0.39	0.38



Intensity data(cd)

C/γ(°)	0.0	5.0	10.0	15.0	20.0	25.0	30.0	35.0	40.0
0.0	865.60	860.37	824.30	763.69	664.15	548.64	449.48	333.59	235.75
45.0	860.64	853.76	819.73	747.39	666.07	549.85	443.31	333.20	242.63
90.0	860.97	848.80	804.10	715.18	623.40	508.12	403.40	306.66	217.20
135.0	866.31	856.13	816.10	741.66	644.33	531.46	431.70	334.03	243.68
180.0	865.60	848.20	795.90	705.00	604.52	507.18	409.84	309.03	222.10
225.0	860.64	841.04	784.72	698.28	594.28	482.68	383.19	290.48	204.15
270.0	860.97	844.68	792.32	701.31	601.49	485.93	380.44	291.03	199.08
315.0	866.31	847.48	799.25	713.81	619.71	505.47	397.73	293.18	208.00
360.0	865.60	860.37	824.30	763.69	664.15	548.64	449.48	333.59	235.75
C/γ(°)	45.0	50.0	55.0	60.0	65.0	70.0	75.0	80.0	85.0
0.0	151.52	98.00	63.26	44.27	32.10	23.56	16.52	11.84	7.10
45.0	151.13	93.93	61.88	43.49	30.67	23.23	16.13	10.85	6.66
90.0	136.37	88.26	56.87	40.30	28.19	21.25	14.59	9.41	5.84
135.0	157.46	102.07	63.04	43.05	30.61	22.13	15.47	10.41	6.44
180.0	139.46	87.87	57.31	40.03	28.02	20.15	14.04	9.14	5.95
225.0	130.04	84.13	54.34	38.04	27.53	19.82	13.60	9.03	5.73
270.0	127.35	83.85	55.17	39.15	27.97	20.54	13.82	8.86	5.12
315.0	131.25	81.48	56.27	39.81	28.35	20.81	14.31	9.36	5.84
360.0	151.52	98.00	63.26	44.27	32.10	23.56	16.52	11.84	7.10
C/γ(°)	90.0								
0.0	4.40								
45.0	4.18								
90.0	3.85								
135.0	4.24								
180.0	4.13								
225.0	3.85								
270.0	3.80								
315.0	3.96								
360.0	4.40								